



# 2020 A/C KIT GUIDE

**INCREASE SALES AND REDUCE COMEBACKS!**

EV09



Don't risk your reputation and profitability by replacing just the compressor. Do the job right and increase customer satisfaction when you install all of the components essential for extended compressor life.

# WHAT'S INSIDE

## HD KIT APPLICATIONS

- Freightliner ..... **PG 1**
- International / Navistar ..... **PG 2**
- Kenworth ..... **PG 4**
- Mack ..... **PG 7**
- Peterbilt ..... **PG 8**
- Volvo..... **PG 12**

## MD KIT APPLICATIONS

- Ford ..... **PG 15**

## CONTACT US ..... **PG 18**

## QUICK TIPS

- Correct Oil ..... **PG 14**
- Flushing ..... **PG 20**

## DID YOU KNOW?

- Accumulator ..... **PG 11**
- Expansion Device ..... **PG 14**
- Compressor Abrasive Material ..... **PG 6**
- Orifice Tube ..... **PG 7**





# WHY EVERCO® HEAVY DUTY A/C KITS?

- ✓ Kits include all required components shipped in one convenient package
- ✓ Everco® HD is an industry leading manufacturer of A/C components
- ✓ Everco® HD A/C Kits reflect a cost savings over individual components
- ✓ Kits available on emergency orders in a single container and arrive complete
- ✓ Reduce warranty, save time and money

Includes parts you need to do the job right, the first time!

- New Premium A/C Compressor
- Filter Drier
- Expansion Device
- Premium Oil
- All gaskets and O-rings



## 2020 A/C KITS

**INCREASE SALES AND REDUCE COMEBACKS!**

\*As a condition of warranty you **MUST** adhere to the provisions outlined in the installation instructions provided with each compressor.



[www.evercohd.com](http://www.evercohd.com)

# FREIGHTLINER

Year	Engine Type	O.E. / Model Compressor	EVHD Compressor	O.E. Receiver Drier	EVHD Receiver Drier	O.E. Expansion Device	EVHD Expansion Device	EVHD A/C KIT
14-10	Detroit Diesel Series 60 Cummins ISB Cummins ISC	SKI4314S Sanden 4314	971040	A22-66700-000 A22-69800-000 A22-63633-000	936043	BOAA4965 ABP-N83-308107 ABP-N83-327302	932230	FL920002
14-03	Caterpillar C13 Detroit Diesel Series 60 Mercedes MBE4000 Mercedes MBE906	SKI4417 SKI4818 Sanden 4417 Sanden 4818 Sanden 4485	967228	ABP-N83-319744 ABP-N83-319745 PH088518-00 PH088539-00	936015	BOAA4965 ABP-N83-308107 ABP-N83-327302	932230	FL920003
14-02	Detroit Diesel Series 60	SKI4417S Sanden 4352 Sanden 4075	967230	ABP-N83-319744 ABP-N83-319745 PH088518-00 PH088539-00	936015	BOAA4965 ABP-N83-308107 ABP-N83-327302	932230	FL920007
12-03	Detroit Diesel Series 60 Cummins ISB Cummins ISC	SKI4314S Sanden 4314	971040	ABP-N83-319744 ABP-N83-319745 PH088518-00 PH088539-00	936015	BOAA4965 ABP-N83-308107 ABP-N83-327302	932230	FL920001
10-02	Detroit Diesel Series 60	SKI4417 Sanden 4417 Sanden 4818 Sanden 4485	967228	ABP-N83-319744 ABP-N83-319745 PH088518-00 PH088539-00	936015	ABP-N83-308071 ABP-N83-308041 ABP-N83-308097	932073	FL920005
07-03	Caterpillar C15	SKI4819 Sanden 4819	967241	ABP-N83-319744 ABP-N83-319745 PH088518-00 PH088539-00	936015	BOAA4965 ABP-N83-308107 ABP-N83-327302	932230	FL920009
07-02	Caterpillar C7 Cummins ISC	SKI4417 Sanden 4417 Sanden 4818 Sanden 4485	967228	ABP-N83-319744 ABP-N83-319745 PH088518-00 PH088539-00	936015	VCC88000030	932233	FL920004
03-00	Detroit Diesel Series 60	SKI4818 Sanden 4818 Sanden 4417 Sanden 4485	967228	ABP-N83-319534 PH088446-00 PH088502-00	936779	ABP-N83-308231	932237	FL920006
03-00	Caterpillar 3406	SKI4819 Sanden 4819	967241	ABP-N83-319534 PH088446-00 PH088502-00	936779	ABP-N83-308231 BOA-80-321-00-259	932237	FL920010
03-94	Detroit Diesel Series 60 Mercedes MBE906	SKI4421 SKI4482 SKI4776 Sanden 4776 Sanden 4421	967240	ABP-N83-319510 PH088335-00	936122	ABP-N83-308071	932073	FL920008
15-02	Classic - All eng. Classic XL - All eng. FLD series - All eng.	SKI4430 SKI4819 Sanden 4819	967241	ABP-N83-319744 ABP-N83-319745 PH088518-00 PH088539-00	936015	ABP-N83-308071	932073	FL920011

Everco® HD A/C Kit components come complete with all necessary gaskets and seals.

Always replace the filter drier/accumulator and expansion device during a compressor replacement.



# INTERNATIONAL / NAVISTAR

Year	Engine Type	O.E. / Model Compressor	EVHD Compressor	O.E. Receiver Drier	EVHD Receiver Drier	O.E. Expansion Device	EVHD Expansion Device	EVHD A/C KIT
11-07	Maxx Force DT	3611894-C92 3611894-C91 Sanden 4347	971052	3666273-C1 3666272-C91	936050	3660853-C2 N8154001 2512331C1 3613243-C91	932178	NV910013
13-00	Maxx Force 11 Maxx Force 13	3808548-C1 3808548-C3 3808548-C4 Sanden 4720	971043	2000821-C1 1693117-C1 BSM319370 540127-C1	936120	2501794-C92 1699955-C2 929-503B	932150	NV910014
15-11	Maxx Force 11 Maxx Force 13	3808548-C1 3808548-C3 3808548-C4 Sanden 4720	971043	6102498-C93 6102498-C92 6102498-C91 3839360-C92 3839360-C91 3839313-C2	935979	3857948-C3 3857948-C2 3857948-C1 3660855-C1	932250	NV910015
12-97	Caterpillar 3406 Caterpillar C10 Caterpillar C12 Caterpillar C13 Caterpillar C15 Cummins ISM Cummins ISX Detroit Diesel Series 60 Cummins Signature 600	3628699-C1 Sanden 4815 Sanden 4546 2597543-C91 2602121-C91	975662	2000821-C2 1693117-C1 BSM319370 540127-C1	936120	2501794-C92 1699955-C2 929-5038	932150	NV910008
11-07	Navistar DT466 Cummins ISX Cummins ISM Cummins ISX15	2602121-C91 3628699-C1 Sanden 4815 Sanden 4546 2597543-C91	975662	3670134-C1 3670135-C91 P6546001	936069	2501794-C92 1699955-C2 929-5038	932150	NV910010
10-07	Navistar 570 Navistar DT466	3582435C1 Sanden 4418 1611363-C4	971041	3542577-C2 3582435-C1	908178	2512331-C1 3613243-C91 3660853-C2	932178	NV910004
08-07	Navistar DT466 Cummins ISX Cummins ISM Cummins ISX15	3628699-C1 Sanden 4815 Sanden 4546 2597543-C91 2602121-C91	975662	3670134-C1 3670135-C91 P6546001	936069	3548044-C1 BOA-80-305-00-949 3542578-C2 2513533-C1	932203	NV910009
08-01	Navistar DT466	3582435C1 Sanden 4418 1611363-C4	971041	3542577-C2 3582435-C1	908178	3548044-C1 BOA-80-305-00-949 3542578-C2 2513533-C1	932203	NV910005
08-01	Navistar VT365 Caterpillar C13 Caterpillar C11	3628700-C1 3547917-C1 Sanden 4544 Sanden 4816	963646	3542577-C2 3582435-C1	908178	3548044-C1 BOA-80-305-00-949 3542578-C2 2513533-C1	932203	NV910006
08-01	Navistar 530 Caterpillar C10 Navistar DT466 Cummins ISM Navistar T444E	3628699-C1 Sanden 4815 Sanden 4546 2597543-C91 2602121-C91	975662	3542577-C2 3582435-C1	908178	3548044-C1 BOA-80-305-00-949 3542578-C2 2513533-C1	932203	NV910007



# INTERNATIONAL / NAVISTAR

*Continued*

Year	Engine Type	O.E. / Model Compressor	EVHD Compressor	O.E. Receiver Drier	EVHD Receiver Drier	O.E. Expansion Device	EVHD Expansion Device	EVHD A/C KIT
01-97	Navistar 530 Caterpillar 3406 Caterpillar C10 Caterpillar C12 Caterpillar C13 Caterpillar C15 Cummins M11 Cummins N14 Detroit Diesel Series 60	2000820-C91 2502459-C91 1-9254 417887C93 488-21909 554712C91 ET210L-25150 2509456-C91	961102 w/o Clutch Assy.	2000821-C1 1693117-C1 BSM319370 540127-C1	936120	2501794-C92 1699955-C2 929-5038	932150	NV910012
01-94	Navistar 530 Caterpillar C10 Caterpillar C12 Navistar DT466 Cummins ISM Cummins M11 Detroit Diesel Series 50 Detroit Diesel Series 60	2000820-C91 2502459-C91 1-9254 417887C93 488-21909 554712C91 ET210L-25150 2509456-C91	961102 w/o Clutch Assy.	2000821-C1 1693117-C1 BSM319370 540127-C1	936120	1696846-C3 1696846-C2 1696846-C1 ZGG19276 540044P 2503783-C91	932119	NV910011
01-93	Navistar 530 Cummins M11 Detroit Diesel Series 60	2000820-C91 2502459-C91 1-9254 417887C93 488-21909 554712C91 ET210L-25150 2509456-C91	961102 w/o Clutch Assy.	2000821-C1 1693117-C1 BSM319370 540127-C1	936120	1691469-C2 2000821-C1 469475-C1 ZGG12029 EA1410	932146	NV910003
10-01	All Engines	3582435C1 Sanden 4418 1611363-C4	971041	3542577-C2 3582435-C1	908178	ZGG709027 BOA-N9535001 BOA4965 351239781 EA1475	932235	NV910016
01-95	All Engines	2000820-C91 2502459-C91 ZGG705298 488-21909 554712C91 ET210L-25150 2509456-C91	961102	2000821-C1 1693117-C1 BSM319370 540127-C1	936120	2503783-C91 1696846-C3 1696846-C2 1696846-C1 ZGG19276 540044P	932234	NV910017
00-93	All Engines	2000820-C91 2502459-C91 ZGG705298 488-21909 554712C91 ET210L-25150 2509456-C91	961102	2000821-C1 1693117-C1 BSM319370 540127-C1	936120	1691469-C2 2000821-C1 469475-C1 ZGG12029 EA1410	932146	NV910018

Everco® HD A/C Kit components come complete with all necessary gaskets and seals.  
Always replace the filter drier/accumulator and expansion device during a compressor replacement.



# KENWORTH

Year	Engine Type	O.E. / Model Compressor	EVHD Compressor	O.E. Receiver Drier	EVHD Receiver Drier	O.E. Expansion Device	EVHD Expansion Device	EVHD A/C KIT
12-07	Caterpillar 3406 Caterpillar C15 Caterpillar C16 Cummins ISX	F69-6003-122 Sanden 4081 Sanden 4398	971037	K251-571 K251-591 F37-3001 GD1135 BSM319360 088324-00 RD5-8254-0	936124	540446BSM	932236	KW930017
12-96	Caterpillar 3406 Cummins M11 Caterpillar N14 Caterpillar C15 Caterpillar C16	F69-1000 F69-6002-231 Sanden 4041 Sanden 4426 Sanden 4696	900346	F37-6000 JA22250 F37-1000 F37-6001 F37-6012	936801	540057BSM 549708BSM F90-6001	932151	KW930001
11-07	Caterpillar 3406 Caterpillar C15 Caterpillar C16	F69-6003-151 Sanden 4370	976615	K251-571 K251-591 F37-3001 GD1135 BSM319360 088324-00 RD5-8254-0	936124	540446BSM	932236	KW930010
11-07	Caterpillar 3406 Caterpillar C15 Caterpillar C16 Cummins ISX	F69-6003-122 Sanden 4081 Sanden 4398	971037	F37-6000 JA2225 F37-1000 F37-6001 F37-6012	936801	540446BSM	932236	KW930016
11-96	Caterpillar 3406 Caterpillar C15 Caterpillar C16 Cummins ISX	F69-6001-122 F69-6002-121 Sanden 4039 Sanden 4424 Sanden 4731	967412	F37-6000 JA2225 F37-1000 F37-6001 F37-6012	936801	540057BSM 549708BSM F90-6001	932151	KW930004
11-96	Caterpillar C13	F69-6003-111 Sanden 4368	971036	F37-6000 JA2225 F37-1000 F37-6001 F37-6012	936801	540057BSM 549708BSM F90-6001	932151	KW930007
11-96	Caterpillar 3406 Caterpillar C15 Caterpillar C16	F69-6003-151 Sanden 4370	976615	F37-6000 JA2225 F37-1000	936801	540057BSM 549708BSM F90-6001	932151	KW930009
11-95	Caterpillar 3406 Caterpillar C15 Caterpillar C16 Cummins ISX	F69-6001-122 F69-6002-121 Sanden 4039 Sanden 4424 Sanden 4731	967412	K251-571 K251-591 F37-3001 GD1135 BSM319360 088324-00 RD5-8254-0	936146	540031BSM RD4157-0 1-2467Q EA1210 EA1065	932115	KW930005
10-07	Caterpillar 3406 Caterpillar C15 Caterpillar C16 Cummins ISX	F69-6003-122 Sanden 4081 Sanden 4398	971037	F31-6063 18-04171	936536	540446BSM	932236	KW930015

Continued on next page



# KENWORTH

*Continued*

Year	Engine Type	O.E. / Model Compressor	EVHD Compressor	O.E. Receiver Drier	EVHD Receiver Drier	O.E. Expansion Device	EVHD Expansion Device	EVHD A/C KIT
10-07	Cummins ISC Paccar X-8	F69-6003-112 Sanden 4081 Sanden 4398	971050	F31-6063 18-04171	936536	540446BSM	932236	KW930011
09-98	Caterpillar ISC Caterpillar C11 Caterpillar C7	F69-6003-111 Sanden 4368	971036	F31-6063 18-04171	936536	540031BSM RD4157-0 1-2467Q EA1210 EA1065	932115	KW930008
09-98	Caterpillar 3406 Caterpillar C15 Caterpillar C16 Cummins ISX	F69-6003-122 Sanden 4081 Sanden 4398	971037	F31-6063 18-04171	936536	540031BSM RD4157-0 1-2467Q EA1210 EA1065	932115	KP930012
09-96	Caterpillar 3406 Caterpillar C15 Caterpillar C16 Cummins ISX	F69-6003-122 Sanden 4081 Sanden 4398	971037	F37-6000 JA2225 F37-1000 F37-6001 F37-6012	936801	540031BSM RD4157-0 1-2467Q EA1210 EA1065	932115	KP930013
09-95	Caterpillar 3406 Caterpillar C15 Caterpillar C16 Cummins ISX	F69-6003-122 Sanden 4081 Sanden 4398	971037	K251-571 K251-591 F37-3001 GD1135 BSM319360 088324-00 RD5-8254-0	936124	540031BSM RD4157-0 1-2467Q EA1210 EA1065	932115	KW930014
09-95	Caterpillar 3406 Caterpillar C15 Caterpillar C16	F69-6001-121 F69-6002-122 F69-6000 Sanden 4040 Sanden 4425 Sanden 4792	975656	K251-571 F37-1003 GD1135 BSM319360 088324-00 RD5-8254-0	936146	540031BSM RD4157-0 1-2467Q EA1210 EA1065	932115	KW930002
09-95	Cummins ISX Caterpillar 3406	F69-6003-121 Sanden 4080 Sanden 4377	971038	K251-571 K251-591 F37-3001 GD1135 BSM319360 088324-00 RD5-8254-0	936124	540031BSM RD4157-0 1-2467Q EA1210 EA1065	932115	KW930003
09-95	Caterpillar C11 Caterpillar C7 Caterpillar ISC	F69-6003-111 Sanden 4368	971036	K251-571 K251-591 F37-3001 GD1135 BSM319360 088324-00 RD5-8254-0	936124	540031BSM RD4157-0 1-2467Q EA1210 EA1065	932115	KW930006

Everco® HD A/C Kit components come complete with all necessary gaskets and seals.

*Continued on next page*

Always replace the filter drier/accumulator and expansion device during a compressor replacement.



# KENWORTH

Continued

Year	Engine Type	O.E. / Model Compressor	EVHD Compressor	O.E. Receiver Drier	EVHD Receiver Drier	O.E. Expansion Device	EVHD Expansion Device	EVHD A/C KIT
09-94	Caterpillar C7 Cummins ISC	F69-1003 F69-6001-111 F69-6002-111 Sanden 4759 Sanden 4432 Sanden 4042	936642	K251-571 K251-591 F37-3001 GD1135 BSM319360 088324-00 RD5-8254-0	936124	RD5-6868-0P 329-404	932115	KW930018
11-07	Caterpillar C15	F69-6003-151 Sanden 4370	976615	K251-571 K251-591 F37-3001 GD1135 BSM319360 088324-00 RD5-8254-0	936124	540446 329-491	917397	KW930019
10-96	T2000 (main unit) Cummins N14	F69-6001-231 F69-6002-231 F69-1000 Sanden 4696 Sanden 4040	900346	F37-1002 F37-6000 F37-1000 088498-00 F37-6001 F37-6012	936801	549708BSM 929-513 F90-6001	917394	KW930020
10-96	T2000 (sleeper unit) Cummins N14	F69-6001-231 F69-6002-231 F69-1000 Sanden 4696 Sanden 4040	900346	F37-1002 F37-6000 F37-1000 088498-00 F37-6001 F37-6012	936801	1000058658 549707BSM 929-512 F90-6000	917392	KW930021
11-08	T300, T370 w/ OE#	F69-6003-112 Sanden 4398 Sanden 4081	971050	K251-566 K256-566 JA2120	936121	540446 329-491	917397	KW930023
11-07	C500, W900 w/ OE#	F69-6003-112 Sanden 4398 Sanden 4081	971050	K251-571 K251-591 F37-3001 GD1135 BSM319360 088324-00 RD5-8254-0	936146	540446 329-491	917397	KW930024

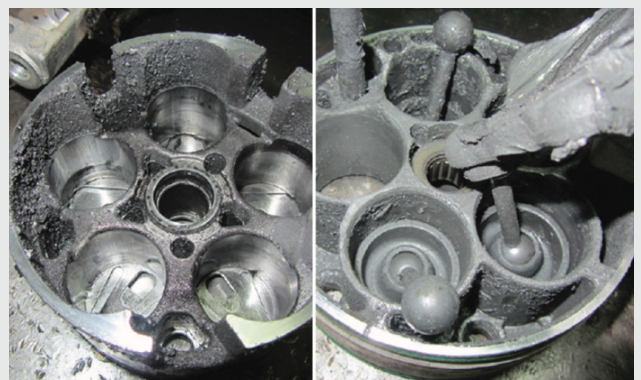
Everco® HD A/C Kit components come complete with all necessary gaskets and seals.

Always replace the filter drier/accumulator and expansion device during a compressor replacement.

## DID YOU KNOW?

### DANGEROUS ABRASIVE COMPOUND...

After a catastrophic compressor failure, every inch of the refrigerant path should be either new or flushed before installing a new compressor. Smaller abrasive material circulates throughout the system, getting embedded into the interior walls of the hose assembly, trapped in the accumulated oil of the evaporator and makes its way back to the compressor in the form of an abrasive compound.



# MACK

Year	Engine Type	O.E. / Model Compressor	EVHD Compressor	O.E. Receiver Drier	EVHD Receiver Drier	O.E. Expansion Device	EVHD Expansion Device	EVHD A/C KIT
15-07	Mack MP7 Mack MP8 Mack MP10 Cummins ISX	206RD52M 206RD53M Sanden 4326	971042	210RD44M 221RD44M	936115	3543-T4935001	932175	MK940005
15-07	Mack MP7 Mack MP8 Mack MP10 Cummins ISX	206RD52M 206RD53M Sanden 4326	971042	20447319 4379-RD5105910P	936106	3543-T4935001	932175	MK940006
06-93	Mack AC-310 Mack AC-330 Mack AMI-300 Mack EM7-300	206RD51M Sanden 4883	975661	221RD335 4379-RD510591-0	936109	4379-RD5-7015-1 4379-RD510546-0	932073	MK940001
06-93	Mack AC-310 Mack AC-330 Mack AMI-300	206RD51M Sanden 4883	975661	221RD335 4379-RD5-11534-0	936109	4379-RD5-6868-0 4379-RD5-6868-1	932115	MK940002
06-93	Mack AMI-300 Mack E7-300 Mack E7-350 Mack E7-400 Mack E7-427 Mack EM7-250 Mack EM7-275 Mack EM7-300	206RD413M Sanden 4639	967213	221RD335 4379-RD5-11534-0	936109	4379-RD5-7015-1 4379-RD510546-0	932073	MK940003
06-93	Mack E7-427 Mack EM7-300 Mack EM7-300L	206RD413M Sanden 4639	967213	221RD335 4379-RD5-11534-0	936109	4379-RD5-6868-0 4379-RD5-6868-1	932115	MK940004

Everco® HD A/C Kit components come complete with all necessary gaskets and seals.  
Always replace the filter drier/accumulator and expansion device during a compressor replacement.

## DID YOU KNOW?

**ORIFICE TUBE** The orifice tube is the main filter in a CCOT system. If it is not replaced, the replacement compressor will not be lubricated properly and will fail. Some orifice tube systems have the tube crimped into the liquid line. The liquid line must be replaced or an orifice tube repair kit installed to prevent compressor failure and poor system performance.





# PETERBILT

Year	Engine Type	O.E. / Model Compressor	EVHD Compressor	O.E. Receiver Drier	EVHD Receiver Drier	O.E. Expansion Device	EVHD Expansion Device	EVHD A/C KIT
12-00	Caterpillar N14	F69-1000 F69-6002-231 F69-6001-231 Sanden 4041 Sanden 4426 Sanden 4696	900346	F37-6000 JA2225 F37-1000	936801	540057BSM 549708BSM EA14650	932151	PB950002
12-99	Caterpillar 3126B Caterpillar C11 Caterpillar C12 Caterpillar C13 Caterpillar C15 Caterpillar C16 Caterpillar C7 Caterpillar 3406	F69-6001-111 F69-1003 F69-6002-111 F69-6001-121 F69-6002-122 Sanden 4042 Sanden 4432 Sanden 4759	936642	F37-6000 JA2225 F37-1000	936801	540057BSM 549708BSM EA14650	932151	PB950004
11-00	Caterpillar 3406 Caterpillar C15 Caterpillar C16 Cummins ISM Cummins ISX Detroit Diesel Series 60	F69-6003-122 Sanden 4079 Sanden 4376	971037	F37-6000 JA2225 F37-1000	936801	18-04275 308011BSM RD4157-0 540056BSM 540044BSM	932115	KP930013
11-99	Cummins ISX Caterpillar C11 Cummins M11 Cummins ISM	F69-6001-122 18-5000 Sanden 4039 Sanden 4731 Sanden 4424	967412	F37-6000 JA2225 F37-1000	936801	18-04275 308011BSM RD4157-0 540056BSM 540044BSM	932115	PB950009
10-99	Caterpillar 3406 Caterpillar C15 Caterpillar C16 Caterpillar C10 Caterpillar C12 Caterpillar ISC Caterpillar ISL Caterpillar N14	F69-6001-111 F69-1003 F69-6002-111 F69-6001-121 F69-6002-122 Sanden 4042 Sanden 4432 Sanden 4759	900346	18-04171 F31-6063	936536	308007BSM P93CAB2500-015	932205	PB950001
10-99	Caterpillar 3126B Caterpillar C11 Caterpillar C12 Caterpillar C13 Caterpillar C15 Caterpillar C16 Caterpillar C7 Caterpillar 3406	F69-6001-111 F69-1003 F69-6002-111 Sanden 4042 Sanden 4432 Sanden 4759	936642	18-04171 F31-6063	936536	308007BSM P93CAB2500-015	932205	PB950003
10-99	Caterpillar 3406 Caterpillar C15 Caterpillar C16 Caterpillar C11	F69-6001-121 F69-6000 F69-6002-122 Sanden 4040 Sanden 4425 Sanden 4792	975656	18-04171 F31-6063	936536	308007BSM P93CAB2500-015	932205	PB950005
10-99	Cummins ISX Caterpillar C11 Cummins M11 Cummins ISM	F69-6001-122 18-5000 Sanden 4039 Sanden 4731 Sanden 4424	967412	F31-6063 18-04171	936536	540057BSM 549708BSM EA14650	932151	PB950006

Continued on next page



# PETERBILT

*Continued*

Year	Engine Type	O.E. / Model Compressor	EVHD Compressor	O.E. Receiver Drier	EVHD Receiver Drier	O.E. Expansion Device	EVHD Expansion Device	EVHD A/C KIT
10-99	Cummins ISX Caterpillar C11 Cummins M11 Cummins ISM	F69-6001-122 18-5000 Sanden 4039 Sanden 4731 Sanden 4424	967412	F31-6063 18-04171	936536	308007BSM P93CAB2500-015	932205	PB950007
10-99	Cummins ISX Caterpillar C11 Cummins M11 Cummins ISM	F69-6001-122 18-5000 Sanden 4039 Sanden 4731 Sanden 4424	967412	F31-6063 18-04171 P93AAA-0101-01	936536	18-04275 308011BSM RD4157-0 540056BSM 540044BSM	932115	PB950008
10-99	Cummins ISX Caterpillar C11 Cummins M11 Cummins ISM	F69-6001-122 18-5000 Sanden 4039 Sanden 4731 Sanden 4424	967412	18-03837 BSM319029 P93AAA-0101-01	936552	18-04275 308011BSM RD4157-0 540056BSM 540044BSM	932115	PB950010
10-99	Caterpillar 3406 Caterpillar C15 Caterpillar C16 Cummins ISM Cummins ISX Detroit Diesel Series 60	F69-6003-122 Sanden 4079 Sanden 4376	971037	F31-6063 18-04171	936536	540057BSM 549708BSM EA14650	932151	PB950011
10-99	Caterpillar 3406 Caterpillar C15 Caterpillar C16 Cummins ISM Cummins ISX Detroit Diesel Series 60	F69-6003-122 Sanden 4079 Sanden 4376	971037	F31-6063 18-04171	936536	308007BSM P93CAB2500-015	932205	PB950012
10-99	Caterpillar 3406 Caterpillar C15 Caterpillar C16 Cummins ISM Cummins ISX Detroit Diesel Series 60	F69-6003-122 Sanden 4079 Sanden 4376	971037	F31-6063 18-04171	936536	18-04275 308011BSM RD4157-0 540056BSM 540044BSM	932115	KP930012
10-98	Caterpillar 3406 Caterpillar C15 Caterpillar C16	F69-6003-121 Sanden 4377	971038	F31-6063 18-04171	936536	308007BSM P93CAB2500-01S	932205	PB950016
02-95	Caterpillar 3406 Caterpillar C15 Caterpillar C16 Cummins ISM Cummins ISX Detroit Diesel Series 60	F69-6003-122 Sanden 4079 Sanden 4376	971037	18-03837 BSM319029 P93AAA-0101-01	936552	18-04275 308011BSM RD4157-0 540056BSM 540044BSM	932115	PB950015

*Continued on next page*





# PETERBILT

*Continued*

Year	Engine Type	O.E. / Model Compressor	EVHD Compressor	O.E. Receiver Drier	EVHD Receiver Drier	O.E. Expansion Device	EVHD Expansion Device	EVHD A/C KIT
07-99	Caterpillar 3406/3126 Caterpillar N14 Caterpillar C11 Caterpillar C12 Caterpillar C13 Caterpillar C15 Caterpillar C16 Cummins ISX Cummins ISM Cummins M11	F69-6001-122 18-5000 Sanden 4039 Sanden 4731 Sanden 4424	967412	F31-6063 18-04171	936536	540056BSM RD5-7179-0	917393	PB950017
11-08	Caterpillar C13 Caterpillar C15 Caterpillar C16 Caterpillar 3406 Cummins ISX	F69-6001-122 18-5000 Sanden 4039 Sanden 4731 Sanden 4424	967412	F31-6063 18-04171	936536	549708BSM 929-513 F90-6001	917394	PB950018
05-97	All Cab Over Engine, Chassis, & Conventional	F69-6001-122 18-5000 Sanden 4039 Sanden 4731 Sanden 4424	967412	F31-6063 18-04171	936536	5X010061 EC1025 RD5-10011-0 E-805051	932207 (w/ orange OT)	PB950019
07-97	All Cab Over Engine, Chassis, & Conventional w/ Bergstrom Main	F69-6001-122 18-5000 Sanden 4039 Sanden 4731 Sanden 4424	967412	F31-6063 18-04171	936536	EA1075 329-431 E-805026 540021BSM EA1315	932073	PB950020
05-99	All Cab Over Engine, Chassis, & Conventional w/ Bergstrom Sleeper	F69-6001-122 18-5000 Sanden 4039 Sanden 4731 Sanden 4424	967412	F31-6063 18-04171	936536	929-506A	932234	PB950021
02-97	All Cab Over Engine, Chassis, & Conventional w/ Signet Sleeper, Internally Equalized	F69-6001-122 18-5000 Sanden 4039 Sanden 4731 Sanden 4424	967412	F31-6063 18-04171	936536	P93CAC3900-02S EA14500 031134-25	932147	PB950022
08-99	All Cab Over Engine, Chassis, & Conventional w/ Internally Equalized Flare Type Expansion	F69-6001-122 18-5000 Sanden 4039 Sanden 4731 Sanden 4424	967412	F31-6063 18-04171	936536	K251-306 826-030 E-805012 E-805013 EA1005 RD4126-1	932138	PB950023
08-99	All Cab Over Engine, Chassis, & Conventional w/ Internally Equalized O-ring Type Expansion	F69-6001-122 18-5000 Sanden 4039 Sanden 4731 Sanden 4424	967412	F31-6063 18-04171	936536	826-062 EA1020 031134-114 031134-138 RD5-3824-1 E-805016 RD53824-0	932137	PB950024
93-87	Cummins ISM Detroit Diesel Series 60 Caterpillar C10 Caterpillar C11 Caterpillar C12 Caterpillar N14 Caterpillar 3406 Caterpillar 3306 Caterpillar 3176	F69-6001-122 18-5000 Sanden 4039 Sanden 4731 Sanden 4424	967412	K256-566 JA2120	936121	18-04275 308011BSM RD4157-0 540056BSM 540044BSM	932115	PB950025



# PETERBILT

*Continued*

Year	Engine Type	O.E. / Model Compressor	EVHD Compressor	O.E. Receiver Drier	EVHD Receiver Drier	O.E. Expansion Device	EVHD Expansion Device	EVHD A/C KIT
93-87	Cummins ISM Detroit Diesel Series 60 Caterpillar C10 Caterpillar C11 Caterpillar C12 Caterpillar N14 Caterpillar 3406 Caterpillar 3306 Caterpillar 3176	F69-6001-122 18-5000 Sanden 4039 Sanden 4731 Sanden 4424	967412	912-579 E-804156 RD5-3593-0P JA1085	936148	18-04275 308011BSM RD4157-0 540056BSM 540044BSM	932115	PB950026
93-87	Cummins ISM Detroit Diesel Series 60 Caterpillar C10 Caterpillar C11 Caterpillar C12 Caterpillar N14 Caterpillar 3406 Caterpillar 3306 Caterpillar 3176	F69-6001-122 18-5000 Sanden 4039 Sanden 4731 Sanden 4424	967412	712-225 E-804070 JA1095 RD5-5572-0P RD5-7063-0P	936110	18-04275 308011BSM RD4157-0 540056BSM 540044BSM	932115	PB950027

Everco® HD A/C Kit components come complete with all necessary gaskets and seals.

Always replace the filter drier/accumulator and expansion device during a compressor replacement.

## DID YOU KNOW?

The accumulator contains the desiccant bag that absorbs trace amounts of moisture entering the system. The bag must contain the correct amount and type of desiccant (XH7 or XH9). Trace moisture can lead to the formation of corrosive acids and cause freeze ups in the system. If the desiccant bag is not properly secured to the “J” tube it can wear through and release the desiccant material and contaminate the entire system.



- Dirty oil from the original failed compressor can be trapped in the bottom of the accumulator. This oil will contain fine abrasive particles that would rapidly ruin the new compressor if the accumulator is not replaced. Since the accumulator cannot be flushed, these contaminants cannot be removed.
- Length of exposure to moisture cannot be determined on a system with a leak
- The average size desiccant bag holds a maximum of a tablespoon of moisture
- Excessive moisture may cause abnormal gauge readings making diagnosis difficult
- The average life span of the desiccant is about four years
- Required replacement for compressor warranty

# VOLVO

Year	Engine Type	O.E. / Model Compressor	EVHD Compressor	O.E. Receiver Drier	EVHD Receiver Drier	O.E. Expansion Device	EVHD Expansion Device	EVHD A/C KIT
10-03	Cummins ISX	8088112 21349573 Sanden 4757 Sanden 4891	975657	20447205 8025531 8086753 8848501	936106	20443850 BOAA4931 BOA73079	932178	VV960002
10-03	Cummins M11 Cummins ISM Cummins 11L Volvo VE-D7 Volvo VE-D12 Volvo VE-D16	20501067 20388777 Sanden 4493 Sanden 4733 Sanden 4892	975658	20447205 8025531 8086753 8848501	936106	20443850 BOAA4931 BOA73079	932178	VV960004
02-96	Caterpillar 3406	8080059 85104467 Sanden 4699 Sanden 4894	967217	20447205 8025531 8086753 8848501	936106	3946673	932136	VV960001
02-96	Cummins M11 Cummins ISM Cummins 11L Volvo VE-D7 Volvo VE-D12 Volvo VE-D16	20501067 20388777 Sanden 4493 Sanden 4733 Sanden 4892	975658	20447205 8025531 8086753 8848501	936106	3946673	932136	VV960003
02-96	Caterpillar 3406 Cummins M11 Detroit Diesel SERIES 60	85104468 Sanden 4896	967273	20447205 8025531 8086753 8848501	936106	329-404 RD5-6868-0P 3916657 540031 BSM308011 EA1065	932115	VV960005
02-96	Caterpillar 3406 Cummins ISL Cummins ISM Cummins L10 Cummins M11 Cummins N14 Detroit Diesel SERIES 60 Volvo VE-D12 Volvo VE-D7	85104468 Sanden 4896	967273	20407203 3934718 RD5-11531-0	936115	329-404 RD5-6868-0P 3916657 540031 BSM308011 EA1065	932115	VV960006
02-96	Cummins M11	85104592 20370289 Sanden 4717 Sanden 4777 Sanden 4893	975660	20447205 8025531 8086753 8848501	936106	3946673	932136	VV960007
02-96	Caterpillar 3306	85104593 20370290 Sanden 4715 Sanden 4778 Sanden 4890	975659	20447205 8025531 8086753 8848501	936106	3946673	932136	VV960008

Continued on next page





# VOLVO

*Continued*

Year	Engine Type	O.E. / Model Compressor	EVHD Compressor	O.E. Receiver Drier	EVHD Receiver Drier	O.E. Expansion Device	EVHD Expansion Device	EVHD A/C KIT
99-97	Caterpillar 3126 Caterpillar 3406 Cummins ISM Cummins ISL Cummins L10 Cummins M11 Cummins N14 Detroit Diesel SERIES 60 Volvo VE-D17 Volvo VE-D12	85119563 85104468 8080060 Sanden 4896	967273	3934718 176238 176239	936183	3949397 329-403 3916182 3918100 3919881 3949281 3949881 3994881	932118	VV960009
01-96	Caterpillar 3126 Caterpillar 3406 Cummins ISM Cummins ISL Cummins L10 Cummins M11 Cummins N14 Detroit Diesel SERIES 60 Volvo VE-D17 Volvo VE-D12	85119563 85104468 8080060 Sanden 4896	967273	564252 101-301 E-804003 249099-10 176357 V1507407 JA2015	936194	329-404 RD5-6868-0P 3916657 540031 BSM308011 EA1065	932115	VV960010
01-96	Caterpillar 3126 Caterpillar 3406 Cummins ISM Cummins ISL Cummins L10 Cummins M11 Cummins N14 Detroit Diesel SERIES 60 Volvo VE-D17 Volvo VE-D12	85119563 85104468 8080060 Sanden 4896	967273	02-7077922 712-821 E-804100 JA1130 RD4160-1	936148	329-404 RD5-6868-0P 3916657 540031 BSM308011 EA1065	932115	VV960012
01-96	Caterpillar 3126 Caterpillar 3406 Cummins ISM Cummins ISL Cummins L10 Cummins M11 Cummins N14 Detroit Diesel SERIES 60 Volvo VE-D17 Volvo VE-D12	85119563 85104468 8080060 Sanden 4896	967273	61510-0001 088360-00 RD5-3593-0 JA1085 712-578 3441124 3949279	936107	329-404 RD5-6868-0P 3916657 540031 BSM308011 EA1065	932115	VV960011

*Continued on next page*



# VOLVO

*Continued*

Year	Engine Type	O.E. / Model Compressor	EVHD Compressor	O.E. Receiver Drier	EVHD Receiver Drier	O.E. Expansion Device	EVHD Expansion Device	EVHD A/C KIT				
All w/ OE# (see notes)	Caterpillar 3126	85119563	967273	61510-5005	936110 includes service port	329-404	932115	VV960013				
	Caterpillar 3406	85104468		3918261		RD5-6868-0P						
	Cummins ISM	8080060		712-225		3916657						
	Cummins ISL	Sanden 4896		E-804070		540031						
	Cummins L10			RD5-5572-0P		BSM308011						
	Cummins M11			RD5-7063-0P		EA1065						
	Cummins N14			JA1095								
	Detroit Diesel SERIES 60											
	Volvo VE-D17											
	Volvo VE-D12											
	All w/ OE# (see notes)	Caterpillar 3126		85119563		967273			61510-5005	936170 includes sight glass	329-404	932115
Caterpillar 3406		85104468	3918261	RD5-6868-0P								
Cummins ISM		8080060	712-225	3916657								
Cummins ISL		Sanden 4896	E-804070	540031								
Cummins L10			RD5-5572-0P	BSM308011								
Cummins M11			RD5-7063-0P	EA1065								
Cummins N14			JA1095									
Detroit Diesel SERIES 60												
Volvo VE-D17												
Volvo VE-D12												

Everco® HD A/C Kit components come complete with all necessary gaskets and seals.

*Continued on next page*

Always replace the filter drier/accumulator and expansion device during a compressor replacement.

## QUICK TIP

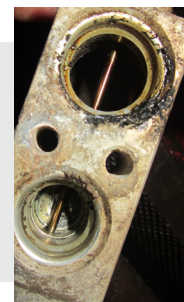
**FOR SUCCESSFUL REPAIR,** only the recommended amount, type, and viscosity of oil, and the appropriate refrigerant should be used. Use of oils containing dye, sealers or other additives that do not meet SAE J2670, may reduce compressor longevity, impact system performance and void your warranty.



## DID YOU KNOW?

**EXPANSION VALVE** If a tiny piece of debris enters the TXV power valve it can become trapped between the diaphragm and the case. This will warp the diaphragm as it flexes back and forth causing the TXV to malfunction. Ensuring that every inch of the refrigerant path is either new or thoroughly flushed is essential to avoid contaminating the TXV.

TXV inlets must be checked for debris or metal particles. Any restrictions will lead to poor performance or compressor failure.



# FORD

Year	Engine Type	O.E. / Model Compressor	EVHD Compressor	O.E. Receiver Drier	EVHD Receiver Drier	O.E. Expansion Device	EVHD Expansion Device	EVHD A/C KIT
17-11	6.8L Triton V10 F450 (16-11) F550 (16-11) F650 (17-16) F750 (17-16)	BC3Z19703B YCC-258	971029	FC3Z19C836A BL3Z19C836B BL3Z19C836A BC3Z19C836B BC3Z19C836A 8L1Z19C836A 7L1Z19C836A YF-3655	936620	BC3Z19849A YG-432	932242	FM970001
16-11	6.7L Powerstroke V8 F450 (16-15) F550 (16-15) F650 (16) F750 (16)	BC3Z19703A BC34-19D629-AE YCC-257 HU9Z19703B	971030	FC3Z19C836A BL3Z19C836B BL3Z19C836A BL3Z19712C BL3Z19712B BL3Z19712A BC3Z19C836B BC3Z19C836A AL1Z19712B AL1Z19712A 9L1Z19712A 8L1Z19C836A 8L1Z19712B 8L1Z19712A 7L1Z19C836A 7L1Z19712B 7L1Z19712A YF-3498	983349	BC3Z19849A YG-432	932242	FM970002
10-08	6.8L Triton V10 F450 SD (10-08) F550 SD (10-08)	BL3Z19703C AU2Z19V703AL AU2Z19V703AH AL3Z19703A AL2Z19703A AL1Z19703B AL1Z19703A 9L3Z19703E 9L3Z19703D 9L3Z19703C 9L3Z19703B 9L3Z19703A 9L2Z19703C 9L2Z19703A 9L1Z19703B 9L1Z19703A 8L3Z19703C 8L2Z19703A 8C3Z19703A 7C3Z19703AA 6L2Z19703EA 6L2Z19703AA YCC-320 YCC-318 YCC-288 YCC-275 YCC-271 YCC-254 YCC-250 YC-2557	935574	8C3Z19C836D 8C3Z19C836B 7C3Z19C836E 7C3Z19C836B YF-3487 YF-3620	983092	XC4H19D990AA F5XZ19D990AB F5XZ19D990AA E1FZ-19D990-A E0VY-19D990-A YG-345 YG-322	932204	FM970003

Continued on next page

Heavy Duty A/C Kits Program

[www.HDACKits.com](http://www.HDACKits.com)





# FORD

Continued

Year	Engine Type	O.E. / Model Compressor	EVHD Compressor	O.E. Receiver Drier	EVHD Receiver Drier	O.E. Expansion Device	EVHD Expansion Device	EVHD A/C KIT
10-08	6.4L Powerstroke V8 F450 SD (10-08) F550 SD (10-08)	BL3Z19703C AU2Z19V703AL AU2Z19V703AH AL3Z19703A AL2Z19703A AL1Z19703B AL1Z19703A 9L3Z19703E 9L3Z19703D 9L3Z19703C 9L3Z19703B 9L3Z19703A 9L2Z19703C 9L2Z19703A 9L1Z19703B 9L1Z19703A 8L3Z19703C 8L2Z19703A 8C3Z19703A 7C3Z19703AA 6L2Z19703EA 6L2Z19703AA YCC-355 YCC-320 YCC-318 YCC-288 YCC-275 YCC-271 YCC-254 YCC-250 YCC-2557	935574	8C3Z19C836C 8C3Z19C836A 7C3Z19C836D 7C3Z19C836C YF-3619	983089	XC4H19D990AA F5XZ19D990AB F5XZ19D990AA E1FZ-19D990-A E0VY-19D990-A YG-345 YG-322	932204	FM970004

Everco® HD A/C Kit components come complete with all necessary gaskets and seals.

Always replace the filter drier/accumulator and expansion device during a compressor replacement.



# TEMP SELECT®

## HEAVY DUTY & OFF ROAD AIR CONDITIONING SERVICE PARTS ORGANIZER

PART NO. 910816

### ASSORTMENT INCLUDES:

Portable design is ideal for use in the field as well as in the shop

No need to have multiple kits. 127 SKUs in this kit cover the most common HD service items

Each component is compatible with R12 and R134a

All o-rings are green HNBR, eliminating multiple color duplication

Four trays hold a total of 613 pieces



- TRAY 1 - O-Rings
- TRAY 2 - O-Rings, Garter Springs & Adapters
- TRAY 3 - Sealing Washers, Caps & Valve Cores
- TRAY 4 - Orifice Tubes & Valve Cores

COVERAGE THROUGH CURRENT MODEL YEAR

Heavy Duty A/C Kits Program  
[www.HDACKits.com](http://www.HDACKits.com)





# HAVE QUESTIONS? WE HAVE THE ANSWERS!

**WEBSITE** Visit [www.evercohd.com](http://www.evercohd.com) for competitor / OEM interchanges, product pictures & product specifications.

**CATALOG** Refer to the Everco HD online PDF catalog, where you can find applications, pictures & interchanges.



[www.evercohd.com](http://www.evercohd.com)

Everco Heavy Duty Product Inquiry Line: **972-316-8296**  
Everco Heavy Duty Sales Representative: **972-316-8297**  
Everco Heavy Duty Customer Service: **972-316-8971**

**EVERCO® HEAVY DUTY  
YOUR A/C MANUFACTURING SOURCE**







# ESSENTIAL STEPS FOR SUCCESSFUL, COMEBACK FREE, COMPRESSOR REPLACEMENT ✓ CHECK LIST

- 1) INSPECT/REPLACE THE THERMOSTATIC EXPANSION VALVE (TXV):** The TXV inlet must be checked for debris or metal particles. Any restrictions will lead to poor performance and/or compressor failure.
- 2) REPLACE THE ORIFICE TUBE:** The orifice tube is the main filter in a CCOT system. It will almost certainly be clogged if the compressor has failed. Failure to replace will result in repeat compressor failure.
- 3) FLUSH THE SYSTEM WITH APPROVED FLUSH:** When the system is repaired, every inch of the refrigerant path should be either new or flushed. Oil acts like fly paper. It will trap and hold metal debris - particularly in the evaporator. Removal of all dirty oil and debris is essential to avoid repeat compressor failure. Newer condenser designs are difficult, if not impossible to flush, and in many cases must be replaced.
- 4) CHECK COMPRESSOR CLUTCH AIR GAP BEFORE INSTALLATION:** The air gap is preset at the factory; however, it is a good practice to double check it before mounting the unit. Incorrect air gap will cause poor performance or noisy operation. Air gap specs are on the instruction sheet. Check the gap at three points around the clutch.
- 5) LUBRICATION:** is the life-blood of the compressor. Refrigerant by itself is a powerful degreaser. Therefore, it is critical that the EXACT AMOUNT, TYPE and VISCOSITY of QUALITY oil be used.
- 6) HAND-TURN THE COMPRESSOR:** To avoid catastrophic compressor damage from liquid slugging on start up, turn the compressor shaft by hand at least 15 times after the hoses have been connected but before ever starting the engine.
- 7) PROPER EVACUATION:** The A/C system must be free of moisture and air to work properly. Evacuate single evaporator systems for at least 45 minutes and dual evaporator systems for at least 90 minutes. Longer evacuations produce colder duct temperatures.
- 8) REFRIGERANT CHARGE LEVEL:** Refrigerant circulates the oil in the system. Too little will result in oil dropping out in the evaporator; the compressor will seize from lack of lubrication. Too much will slug (hydraulic lock) the compressor resulting in catastrophic damage.
- 9) CONDENSER AIRFLOW:** The condenser must have adequate airflow. Poor airflow is a common cause of premature compressor failure and poor system performance. Check: cooling fan operation, condenser fins for damage or debris, missing air dams or shrouds.
- 10) CLUTCH VOLTAGE:** Even a small voltage drop will significantly reduce the strength of the magnetic field that holds the clutch engaged. Perform a voltage-drop test at the clutch connector with the clutch engaged. Voltage drop should be less than 0.15V and system voltage never less than 12V.
- 11) BURNISH THE CLUTCH:** This process increases the grip between the clutch hub and the clutch pulley. This reduces the possibility of slippage, especially under high temperature/pressure conditions. Run the engine @ high idle and cycle the compressor clutch off and on 20 times using the A/C control switch on the dash.
- 12) VERIFY THE REPAIR:** Perform a leak check and a maximum heat load temperature stress test to confirm the overall integrity and efficiency of the system. A low refrigerant charge level will starve the compressor of lubrication and result in premature failure. A temperature test can uncover hidden weaknesses in the system.





# START EVERY A/C SEASON WITH EVERCO® HEAVY DUTY!

PETERBILT • KENWORTH • FREIGHTLINER • NAVISTAR • MACK • VOLVO • FORD

STOCK UP WITH THESE TOP SELLING PARTS AVAILABLE NOW!  
compressors - blower motors - accumulator / filter driers - expansion devices



**EVERCO® HEAVY DUTY**  
**YOUR A/C MANUFACTURING SOURCE**

[www.EvercoHD.com](http://www.EvercoHD.com)

© Copyright 2020, All rights reserved

EV09