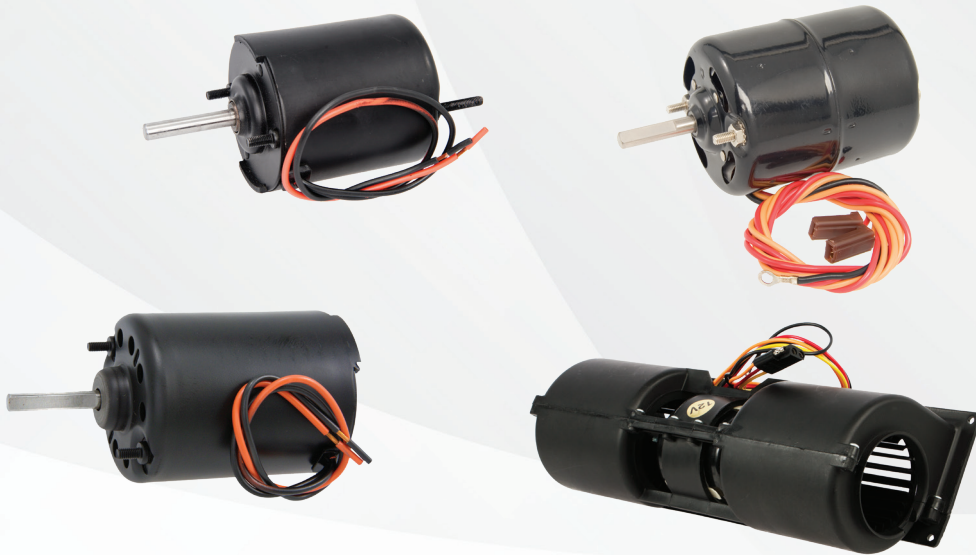




HEAVY DUTY BLOWER MOTORS FOR CABIN COMFORT ALL YEAR ROUND

Everco® HD manufactures and distributes a comprehensive line of heavy duty blower motors for bus and transit vehicles. Our customers can expect a quality product that is tested, validated and inspected before it ever goes out the door.



DID YOU KNOW? Everco® Heavy Duty Offers a Comprehensive Line of BLDC Motors

NEWER TECHNOLOGY

Brushless blower motors are designed to provide precise control and a longer lifespan. The newer technology adds to the complexity of the motor's electronics which come with an increased cost. However, with efficiencies such as increased speed control, reliability and service life, investing in a BLDC motor can often be recovered throughout the life of the unit.

WORLD CLASS MANUFACTURING

As a basic manufacturer in blower motors, our Unimotor® manufacturing facility has the ability to identify known flaws and engineer/manufacture a solution. Our attention to detail delivers a quality BLDC blower motor featuring:

- Custom Unimotor® Wheel Design
- Sensorless Open-Loop Commutation
- EMI Suppression
- Soft Stall and Hard Stall Protection
- Over Current Limit Protection
- Soft Start / Stop Acceleration
- Hermetically Sealed Electronics
- Integrated Cooling

